



Renovate Bot

A bot for automated dependency updates

What is Renovate?

Renovate (often referred to as "Renovate Bot") is an Open Source tool designed to **automate the process** of:

- **Detecting dependencies** in a repository
 - Open Source
 - Private/closed source
- **Checking if there are newer versions** which can be updated to
- Creating commits and **Merge/Pull Requests** to apply such changes
 - include Release Notes if available

Purpose

- Address the **problem of stale/out-of-date dependencies** in software projects
- Out-of-date projects **missing** out on **bug fixes or new features**, but they also suffer from the following **indirect consequences** too
 - Getting further into "technical debt" by **increasing the amount of custom code** using deprecated APIs
 - Increasing the time-to-resolution of vulnerabilities due to the **risk of performing large jumps** of dependency versions under stress
- Save time to **focus on more important duties** by automating the process of updating dependencies

Language Support

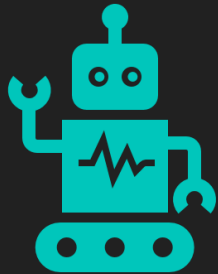
Renovate supports a bunch of languages

- Docker
 - Docker's Dockerfile files
- Java
 - Maven
 - Gradle
- Javascript
 - package.json files
 - npm, yarn and pnpm
- And many more ;)



Renovate at CSS

Why do we use it?



Edgar not suitable for DevOps applications (AWL 2.0)

css-versions-maven-plugin: Specialized application/plugin that defines and updates the dependency versions **based on the CSS software release schedule**

Releases transient snapshot dependencies



DevOps team is responsible to use the correct versions

In DevOps mode there is **no fixed schedule**
No snapshot versions, only released versions

Running Renovate

- CSS is using the self-hosting approach on our **K8s cluster**
- Renovate is run as **CRON job** at **every full hour** (0 * * * *)
 - This can be changed on demand for a whole Bitbucket project (not repository level)
- Renovate is **enabled by default** for every **new DevOps project**
 - Older projects need to be enabled by support ticket
 - Teamcity builds need to be adjusted (no display, apply and update dependencies builds anymore)

Onboarding

- Once Renovate is enabled there will be a **"Configure Renovate" Pull Request** (aka Onboarding PR) created
 - Explains the configuration and what will be updated if merged
- **Risk-free onboarding**
 - No further PRs until Onboarding PR is merged
 - Edit configuration within the `renovate/configure` branch
 - Renovate updates the description according to the changes
- Onboarding PR creates **renovate.json file** in root directory
 - Contains the default settings
 - Can be updated with custom settings

Introduction

The purpose of this report is to...

Methodology



The methodology used in this study involves a series of steps...

The data was collected through a series of interviews...

Results

- 1. The first result is that...
- 2. The second result is that...
- 3. The third result is that...
- 4. The fourth result is that...
- 5. The fifth result is that...
- 6. The sixth result is that...
- 7. The seventh result is that...
- 8. The eighth result is that...
- 9. The ninth result is that...
- 10. The tenth result is that...

Conclusion

In conclusion, the findings of this study indicate that...

These results have important implications for the field of...

References

The following references were consulted during the research process:

Appendix

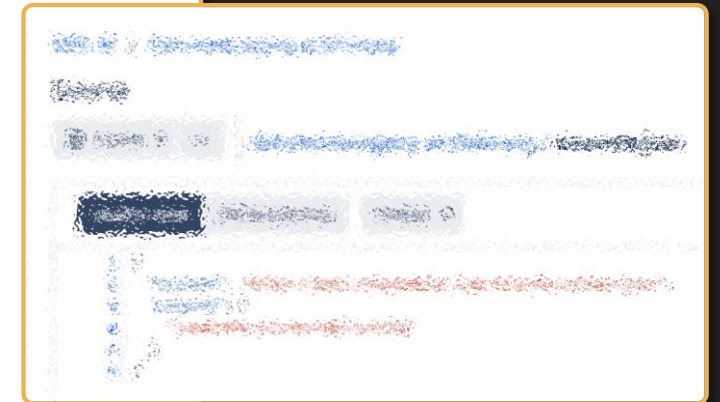
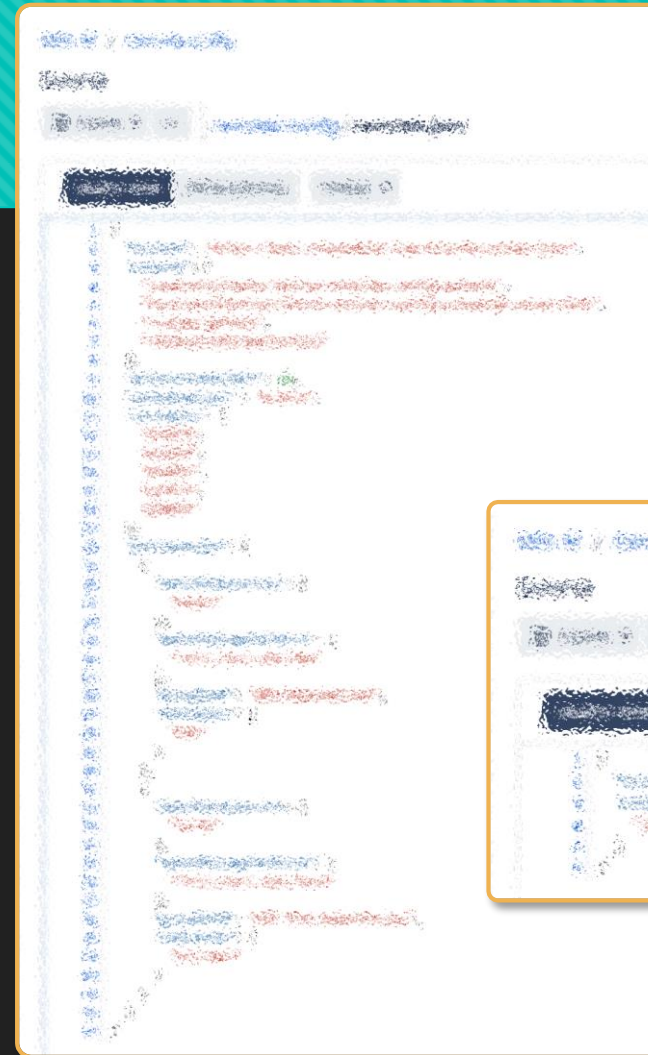
- 1. Appendix A: Interview Schedule
- 2. Appendix B: Data Collection Instruments

Configuration

Renovate is **highly configurable** through `renovate.json`. Some very **useful features** include the following

- Scheduling
- Automerge
- Reviewers
- Grouping
- Limit open branches/PRs
- Exclude dependencies

There is the ability to define so called "**config presets**" which can be reused across different repositories



Lessons learned at DMS

- PR handling
 - To let Renovate rebase a stale PR type rebase! in front of PR title
 - Decline a PR will make Renovate not create it again (ie to skip a version of a dependency)
 - Delete a PR (and its branch) will cause Renovate to create it again in the next run (ie to solve a merge conflict)
- Use **automerge for bugfixes** to reduce noise
 - “automergeType”: “branch”: Don't create PR, merge branch directly
- **Reduce** the use of **grouping** not to ‘block’ other dependencies from updating when one in group fails
- Define a **responsible person in the team** for the generated PRs



Renovate

Questions?



Thank you!

Ruth Ziegler

ruth.ziegler@css.ch

<https://github.com/renovatebot/renovate>

<https://docs.renovatebot.com/>